



Incinerator on Portland

Air pollution poses a real threat to public health so I joined others and spoke at the public planning committee on the incinerator. We won. The plan was rejected but there is an appeal. It is not right to put more lorries through the town. If we get round to a national ban on single use plastic and have bottle return schemes then there will not be a need for such incinerators anyway. I spoke at the incinerator public inquiry and pressed home points about public health and pollution.



Tumbledown

Opportunities to join with a volunteer groups on Friday mornings doing gardening and countryside activities. Some of the produce goes to the food bank. This is at the town council owned farm just north of Radipole lake. If anyone would like to come along they can contact alanchambers@weymouthtowncouncil.gov.uk or contact me. I can pick people up on Friday morning, to and from central Weymouth.

Parking

I oppose the higher car parking charges for Weymouth, with other Dorset towns remaining much cheaper. This is not fair on our town. The Conservative controlled Dorset Council cabinet needs to change its mind.

Neighbourhood plan

The town council is working on a new plan for the coming decade. One part concerns building on two small car parks. I do not support this in the absence of much better bus links and joining up with the train station.



dorset.greenparty.org.uk



Promoted by Andy McEwen on behalf of Jon Orrell (Green Party), both at Garden Cottage, Netherbury, Dorset DT6 5NB
Printed on 100% recycled paper by Print Team (Dorset) Ltd.21 Mereside | Navigator Business Park | Portland | Dorset | DT5 1PY



MELCOMBE REGIS GREEN MATTERS



WINTER 2023

Dear Resident

Welcome to the Winter Newsletter. All details are correct as we go to press but there's a lot happening at the moment so by the time we've delivered to all households some details may have changed.

Best Wishes

Jon Orrell

cllrjon.orrell@dorsetcouncil.gov.uk Telephone: 01305 772152



Flood Prevention



Queen Street flood store

Melcombe has many houses that are close to sea level. Flooding from the sea or river is a growing threat as global heating boosts the power of storms.

There is action underway to help. The first is more work to improve our harbour sea walls. There is a multi-million pound investment through the Environment Agency and Council to do this. The plans are available on the Dorset Coastal Forum site. We need urgent action to build up the harbour walls and build up parts of the Esplanade.

Prevention is better than cure. However, in preparation there

has been an initiative to recruit flood wardens. These helpful locals will monitor weather warnings. They will then turn out to check on streets if the threat looks real. They link to the environment agency and local emergency services if needed. If you are interested in joining; contact the coastal forum (or me).

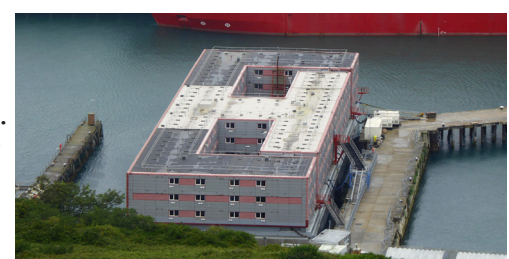


Where wall repairs are planned

It is worth signing up for flood and severe weather warnings on the government or met office website.

No to the barge

The barge is wrong. I totally opposed it coming here. Asylum seekers should be processed quickly and settled, not put on a cramped barge. I voted to remove the barge asap at Dorset Council. Cllr Kate Wheller and I tried to get a much stronger stance. We asked that the council use all legal means to block the barge. We noted other councils had done this. We were defeated by the Conservative councillor majority in Dorset. So, we have a Conservative government barge imposed.



(Photo credit Ashley Smith)